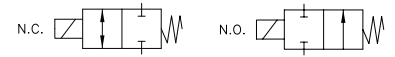


SV33 & SV43

2-way Normally Closed and Normally Open
Direct Acting Solenoid Valves



Valcor General Purpose Series



DESCRIPTION

These compact, 2-way direct acting solenoid valves are available in normally closed and normally open operating modes. They range from 1/8" to 3/8" NPT port sizes with orifice sizes from 3/64" to 3/8". These sturdy construction valves are designed to handle a wide range of fluids with an operating pressure range of 0 PSI up to 1050 PSI. For special applications, please contact your Valcor customer service representative.

APPLICATIONS

The SV33 & SV43 series are suitable for a broad range of industrial applications. Typical applications include:

- General on-off control of water, oil, and gas
- Gas and liquid distribution systems
- Process control and production piping
- Calibration and test stands
- Pilot plant control loops
- Economical choice for OEM applications

FEATURES

- Direct acting construction designed for high cycles and long life
- Wide selection of construction materials allow for use on a variety of fluids
- AC and DC solenoid coils in a wide range of standard voltages
- NEMA4 as standard coil enclosure, NEMA7 explosion proof and others available
- Pressures rating of up to 1,050 psi
- Mountable in any position



VALCOR SV33 & SV43 SPECIFICATIONS

Construction

Operating Mode	Normally Closed: Open when energized, closed when de-energized. Normally Open : Closed when energized, open when de-energized.
Port Size (in.)	1/8, 1/4, 3/8
Orifice Size (in.)	3/64 to 3/8
Temperature Ratings	Ambient Temp.-40°F to 150°F max. with Class F Coil; 175°F max. with Class H Coil. Fluid Temp. See specifications, next page
Mounting Position	Mounts in any position (Best position is solenoid upright and vertical)
Agency Listings	UL Listed, CSA Approved by order
Options	Manual override, neon lamp, surge suppressor
Valve Parts in Contact with Fluid	
Body	Brass, 303 stainless steel
Seals	Buna N, Viton, Ethylene propylene, PTFE
Internal Metal Parts	303 and 430F stainless steel

Electrical

Standard Voltages	AC 24V 60Hz AC 110V 50Hz, AC 120V 60Hz AC 220V 50Hz, AC 240V 60Hz DV 12V, DC 24V
Voltage Tolerance	+10% to -15% of applicable voltage
Coil Housings	Standard: Watertight NEMA 4 Options : Conduit, grommet, DIN, explosion proof NEMA 7, open frame, junction box
Coil	Class F and H
Lead Length	24 inch

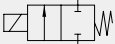
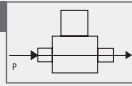
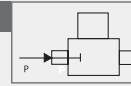
*Consult the factory for specifications other than those listed above

Coil Data

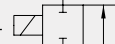
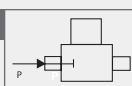
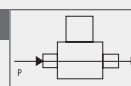
Model		SV330		SV430		SV331		SV431	
Frequency (Hz)		50	60	50	60	50	60	50	60
Power (VA)	Inrush	37	30	43	37	26	22	35	30
	Holding	18	13	23	16	14	11	19	14
Power Consumption (W)	AC	10		11		8		8	
	DC	10				9			

VALCOR SV33 & SV43 SPECIFICATIONS

Specification for SV33 Normally Closed

Port Size (NPT) (in.)	Orifice Size (in.)	C _v	Operating Pressure Differential				Max Fluid Temp °F	Model Number		
			Max Pressure (PSI)					Normally Closed		
			Gas, Liquid		Steam			Brass	303 SS	
			AC	DC	AC	DC				
Normally Closed										
1/8	3/64	0.05	0	770	420	-	-	200	SV331GF02V8AC3	SV331GF02V2AC3
	1/16	0.10	0	560	185	-	-	200	SV331GF02V8AC5	SV331GF02V2AC5
1/8	3/32	0.21	0	300	130	-	-	200	SV331GF02V8AC9	SV331GF02V2AC9
	1/8	0.32	0	155	60	-	-	200	SV331GF02V8AD5	SV331GF02V2AD5
1/8	1/8	0.32	0	-	-	100	60	298	SV331GH02T8AD5	SV331GH02T2AD5
	5/32	0.43	0	105	35	-	-	200	SV331GF02V8AD7	SV331GF02V2AD7
	3/16	0.49	0	75	20	-	-	200	SV331GF02V8AE1	SV331GF02V2AE1
	1/4	0.10	0	560	185	-	-	200	SV331GF02V8BC5	SV331GF02V3BC5
1/4	3/32	0.21	0	300	130	-	-	200	SV331GF02V8BC9	SV331GF02V3BC9
	5/32	0.43	0	105	35	-	-	200	SV331GF02V8BD7	SV331GF02V3BD7
1/4	3/64	0.05	0	1050	1000	-	-	200	SV330GF02V8BC3	SV330GF02V3BC3
	1/16	0.10	0	700	300	-	-	200	SV330GF02V8BC5	SV330GF02V3BC5
	5/64	0.14	0	500	240	-	-	200	SV330GF02V8BC7	SV330GF02V3BC7
	3/32	0.21	0	400	200	-	-	200	SV330GF02V8BC9	SV330GF02V3BC9
	1/8	0.36	0	200	140	-	-	200	SV330GF02V8BD5	SV330GF02V3BD5
	5/32	0.44	0	150	100	-	-	200	SV330GF02V8BD7	SV330GF02V3BD7
	3/16	0.65	0	100	70	-	-	200	SV330GF02V8BE1	SV330GF02V3BE1
	3/16	0.65	0	-	-	100	70	298	SV330GH02T8BE1	SV330GH02T3BE1
3/8	1/4	0.85	0	50	20	-	-	200	---	SV330GF02V3BE7
	1/8	0.36	0	200	140	-	-	200	SV330GF02V9CD5	SV330GF02V3CD5
	3/16	0.65	0	100	70	-	-	200	SV330GF02V9CE1	SV330GF02V3CE1
	9/32	1.00	0	35	15	-	-	200	SV330GF02V9CF1	SV330GF02V3CF1
	3/8	1.70	0	20	5	-	-	200	SV330GF02V9CF5	SV330GF02V3CF5

Specification for SV43 Normally Open

Port Size (NPT) (in.)	Orifice Size (in.)	C _v	Operating Pressure Differential				Max Fluid Temp °F	Model Number		
			Max Pressure (PSI)					Normally Closed		
			Gas, Liquid		Steam			Brass	303 SS	
			AC	DC	AC	DC				
Normally Open										
1/8	3/64	0.05	0	350	350	-	-	200	SV431GF02V8AC3	SV431GF02V2AC3
	1/16	0.1	0	200	200	-	-	200	SV431GF02V8AC5	SV431GF02V2AC5
	3/32	0.2	0	105	105	-	-	200	SV431GF02V8AC9	SV431GF02V2AC9
1/8	1/8	0.3	0	60	60	-	-	200	SV431GF02V8AD5	SV431GF02V2AD5
	3/64	0.05	0	600	600	-	-	200	SV430GF02V8BC3	SV430GF02V3BC3
1/4	1/16	0.1	0	325	325	-	-	200	SV430GF02V8BC5	SV430GF02V3BC5
	3/32	0.2	0	150	150	-	-	200	SV430GF02V8BC9	SV430GF02V3BC9
1/4	1/8	0.3	0	100	100	-	-	200	SV430GF02V8BD5	SV430GF02V3BD5
	3/16	0.65	0	40	40	-	-	200	SV430GF02V8BE1	SV430GF02V3BE1
	3/16	0.65	0	-	-	30	-	298	SV430GH02T8BE1	SV430GH02T3BE1

*Class H Coil Recommended for Steam and Other High Temperature Applications

VALCOR SV33 & SV43 SPECIFICATIONS

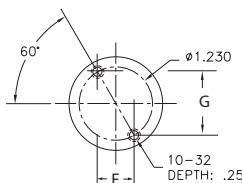
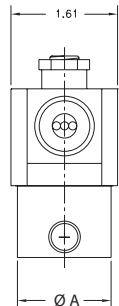
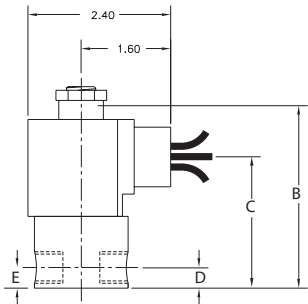
Part Number Configurator

Example Part Number: SV330GF02N2A D5

S	V	3	3	0	G	F	0	2	N	2	A	D	5				
Numbers 1 thru 5					6	7	8-9		10	11	12		13-14		15		
Series	Operating Mode	Housing		Coil Insulation		Applicable Voltage		Seal Material		Body Code		Port Connection (NPT) (in.)		Orifice Size (in.)		Option	
SV330	Normally Closed	A	Conduit	F	Class F	02	120V/60Hz 110V/50Hz	N	Buna N	2	SS 1/8" NPT	A	1/8	C3	3/64	M	Manual Override
SV430	Normally Open	P	Open Frame	H	ClassH	04	220V/60Hz 220V/50Hz	V	Viton	3	SS 1/4" & 3/8" NPT	B	1/4	C5	1/16		
SV331	Normally Closed	B	Grommet	T	PTFE	01	24V/60Hz	J	Buna N*	8	Brass 1/8" & 1/4" NPT	C	3/8	C7	5/64		
SV431	Normally Open	Y	DIN	C	Ethylene Propylene	15	12V DC	L	Viton*	9	Brass 3/8" NPT			C9	3/32		
		X	Explosion Proof NEMA 7	E	Ethylene Propylene	16	24V DC							D5	1/8		
		S	Junction Box											D7	5/32		
		G	Water-tight NEMA 4											E1	3/16		
														E7	1/4		
														F1	9/32		
														F5	3/8		

- 1)* Standard shading coil material is copper. "J**", "L**", "E**" has silver shading coil.
- 2) Coil wattage for SV330 is 10W for AC & DC, for SV331 8W on AC and 9 watts on DC for SV430 11W on AC and 10W on DC, for SV431 8W on AC and 9W on DC.

External Dimensions



Body Code	Port Conn. (in.)	Model	A	B	C	D	E	F	G	Weight (lb)
2, 3, 8	1/8	SV330	1.22	3.10	1.71	0.29	0.61	0.73	0.90	
		SV430		3.43						
		SV331		2.78						1.63
		SV431		2.94						
	1/4	SV330	1.63	3.14	1.71	0.37	0.91	1.10		
		SV430		3.51						
	3/8	SV330	1.63	3.63	2.12	0.45	0.98	1.30		
9	1/8	SV331	1.63	2.90	1.63	0.37	---	0.90		
		SV431		3.06						
	SV330	3.14		1.71						
	SV430	3.51								
	3/8	SV330	1.89	3.30	1.43	0.44	---	1.10		

Units : Inch